

TESTED TO COMPLY WITH



ASTM  
E3022-18  
Standard

SPECTROLINE®  
NDT

# PowerMAX™ 365

UV-A LED Panel Flood Lamp

PM-16B

- ▶ Nominal steady-state UV-A (365 nm) intensity of  $6500 \mu\text{W}/\text{cm}^2$  at 15 in (38 cm)
- ▶ Low visible light emission—less than 0.5 foot-candle (2.2 lux)

## Ideal for:



NDT  
INSPECTION  
BOOTHS



FLUORESCENT  
PENETRANT AND  
MAGNETIC PARTICLE  
INSPECTION



WASH STATION  
INSPECTION



SCREENING OF  
FLUORESCENT  
PARTICLES

### ROCKER SWITCH

Easily switched between UV & White Light

### MOUNTABLE

For overhead inspection or in-line applications

### ELECTRONIC INTENSITY CONTROL

Capable of adjusting light output

### ALUMINUM HOUSING

Built for use in the most rugged environments

### LONG LASTING LEDs

### INTEGRAL UV-A PASS FILTERS

Reduce visible wavelengths



# PowerMAX™ 365 PM-16B

MODEL	NOMINAL STEADY-STATE UV-A INTENSITY WITH FILTER at 15 in (38 cm) ①	UV-A COVERAGE AREA at 15 in (38 cm) at minimum 1,200 $\mu\text{W}/\text{cm}^2$	WHITE LIGHT INTENSITY	VISIBLE LIGHT MEASUREMENT
PM-16B	6,500 $\mu\text{W}/\text{cm}^2$	23.6 x 10.63 In (60 x 27 cm)	>325 foot-candle (>3500 Lux)	<1 foot-candle (<10 lux)

① UV-A intensity reading taken with the Spectroline® AccuMAX™ Series meter, and is factory set to the value shown.

## PM-16B

Light Source:	16 UV-A LED'S & 4 White LED'S
Lamp Style:	Panel Flood Lamp
Length:	19.1 in (48.5 cm)
Width:	6.7 in (17 cm)
Height:	3.94 in (10 cm)
Weight:	16.5 Lb (7.5 Kg)
Intensity Control:	From 10% - 100%
Power Requirements:	100V - 264V, 50-60 Hz

## PowerMAX™ 365 UV-A LED Panel Flood Lamp Kit

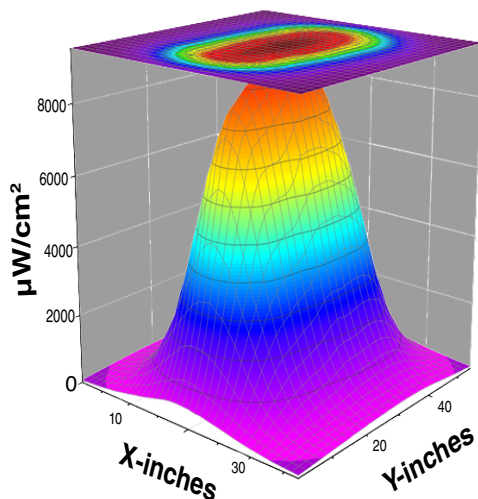
Comes complete with PowerMAX™ 365 UV-A LED Panel Flood Lamp, Power Cord, Chain and Hooks.



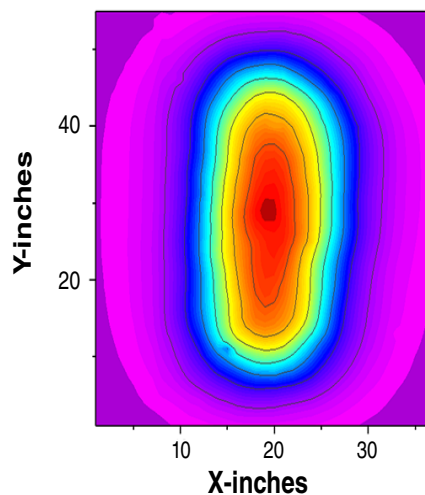
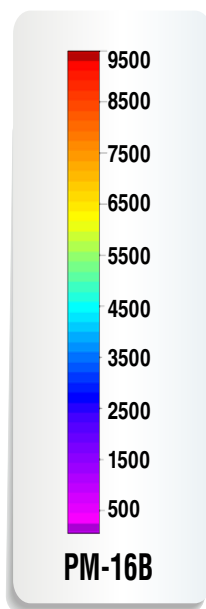
## UV-A Beam Profiles

### PM-16B

Surface Contour Profile at 15 in (38 cm)



Top Intensity Profile at 15 in (38 cm)



DISTRIBUTED BY:

www.Spectro-UV.com  
4 Dubon Ct., Farmingdale, NY 11735  
866-230-7305